

3.3 Socio-economic Impact Assessment

3.3.1 Demographics

In 2001, 138,948 persons were enumerated in the parish of Westmoreland. The Statistical Institute of Jamaica estimated a population of 142,500 for Westmoreland at the end of 2004. This was 5.4% of the island's population of 2,650,900 placing it seventh as the most populated parish. The population growth rate between 2001 and 2004 was therefore 0.64% annually. The population of Savanna-la-mar on the other hand, grew by 2.17% annually between 1991 and 2001, that is, from 16,340 to 19,893 respectively (see Table 3.6). The town's growth has mainly been the result of natural increase and immigration. The contributions of natural increase and immigration to population growth cannot be quantified due to lack of data.

Table 3.6 Population Growth of Savanna-la-mar and Westmoreland 1991 to 2004

Location	1991	2001	2004	Annual Rate of Growth 1991-2001
Westmoreland	128,361	138,948	142,500	.80
Savanna-la-mar	16,340	19,893	-	2.17

Source: Statistical Institute of Jamaica

Population Projections

Population projection was based on the formula;

$$\text{Population } P = [\log P_0 + N * \log(1 + r)]^{10}$$

- where
- P = Population of a certain year
 - P₀ = Population of a region at year 0
 - N = Number of years from year 0
 - r = Annual growth rate

Table 3.7 Population Projection for Savanna-la-mar Westmoreland 2001-2021

Town	2001	2006	2011	2016	2021	Growth Rate %
Savanna-la-mar	19,893	22,147	24,657	27,451	30,561	2.17

The projected population for Savanna-la-mar (Table 3.7) is based on the 1991 to 2001 growth rate of 2.17 for the town. Over the 20-year period the population is expected to grow from 19,893 2001 to 30,561 by 2021.

Mortality

The development plan for the cemetery proposes approximately 1200 vaults. In 2003, there were 770 deaths in the parish of Westmoreland (STATIN). This was approximately 0.54% of the population of Westmoreland. Crudely assuming a similar percentage for Savanna-la-mar in the absence of actual figures, the town should have experienced approximately 110 deaths.

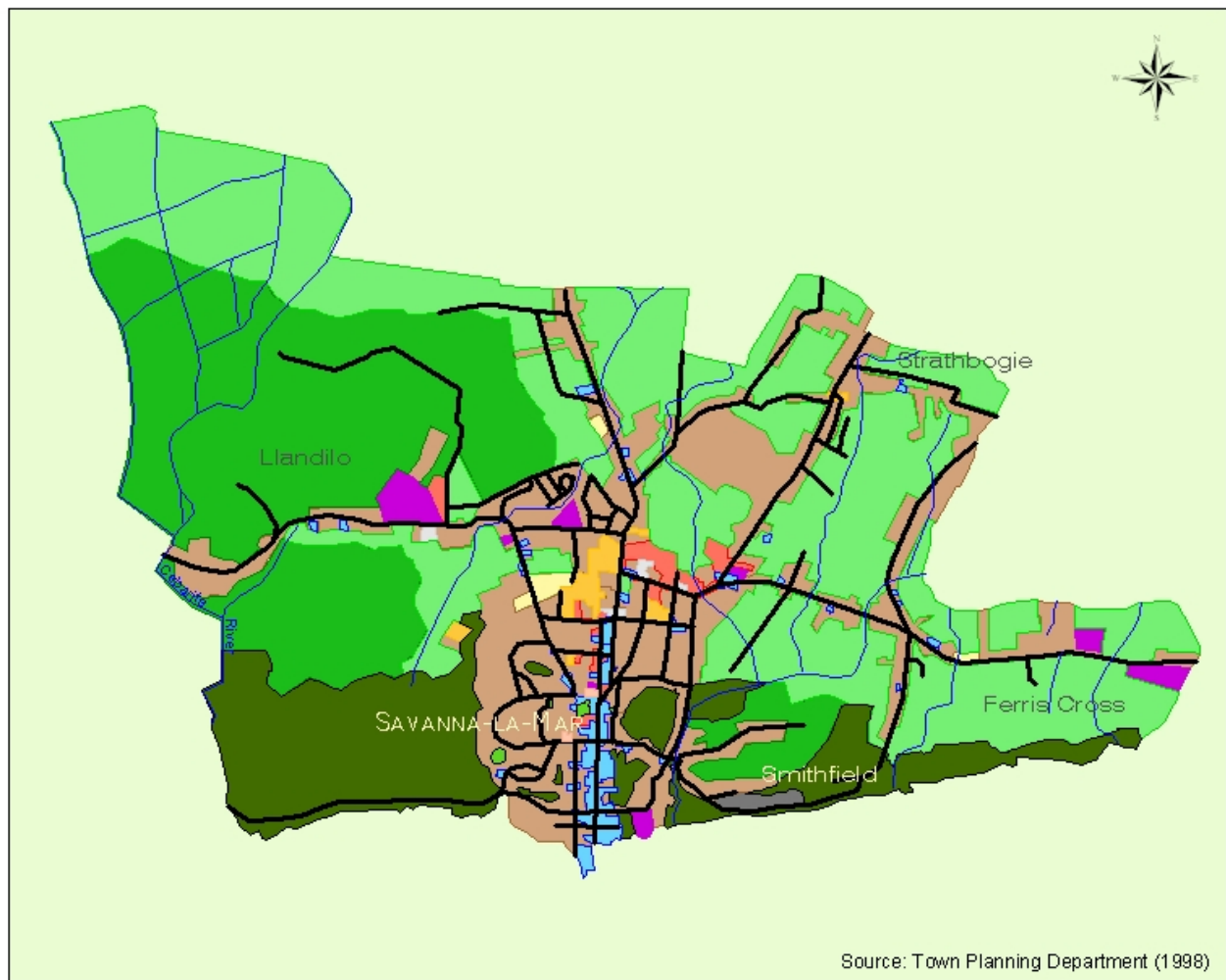
3.3.2 Land Use

The property is zoned by the Westmoreland Development Order 1978 (amended in 1991) for agriculture, while the Savanna-la-mar Development Plan (1998) developed by the Town Planning Department recommended that it be used for commercial activities or public buildings. However, the dominant land use presently on the property is open space/agriculture (informal cattle grazing). The adjacent land uses are institutional (south), commercial (west), cemetery (south) and residential (north and east).



Plate 10: Cow grazing at the site of the proposed West Palm Memorial Gardens

SAVANNA - LA - MAR EXISTING LAND USE (1989)

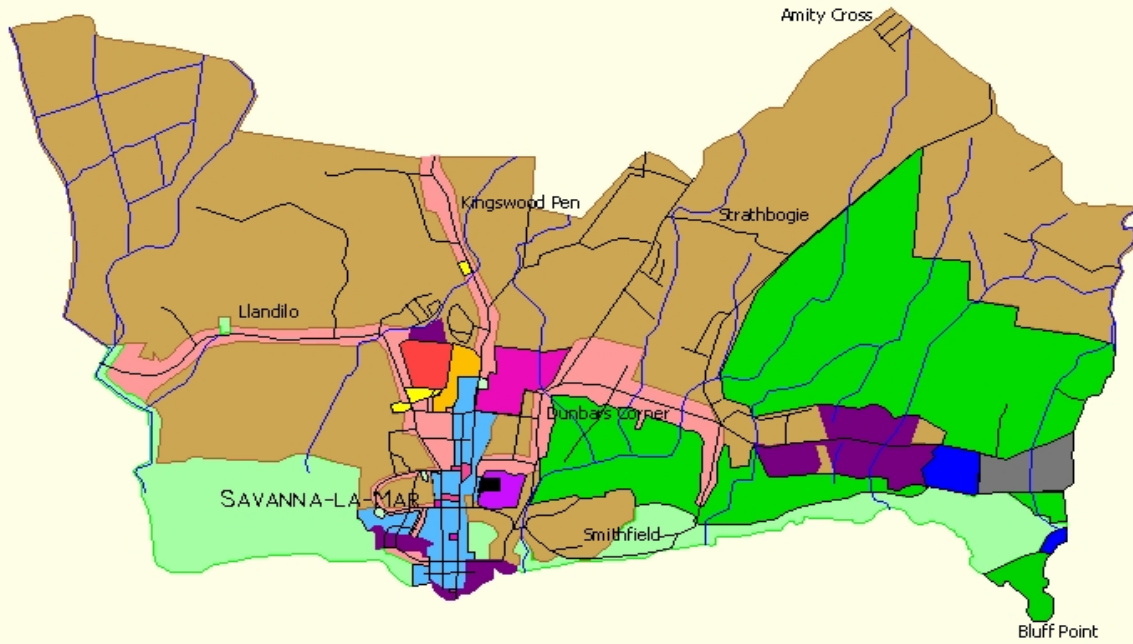


LEGEND

	River		Institution
	Public Assembly		Industrial
	Road		Vacant
	Open Space		Public Building
	Commercial/Office		Residential
	Swamp		Dump
	Agriculture		Cemetery
	Scrub		

Map 6: Land Use Map of Savanna-la-mar, Westmoreland (TPD, 1989)

SAVANNA-LA-MAR PROPOSED LAND USE ZONING (1995)



Source: Town Planning Department (1998)

LEGEND

	River		Transportation
	Road		Public Open Space
	Recreational / Conservation		Agriculture
	Resort / Recreational		Cemetary
	Resort / Residential		Industrial
	Public Assembly		Residential
	Commercial / Public Building		Commercial
	Educational / Residential		Conservation
	Educational		Commercial / Residential
	Commercial / Industrial		

Map 7: Proposed Land Use Map of Savanna-la-mar, Westmoreland (TPD, 1989)