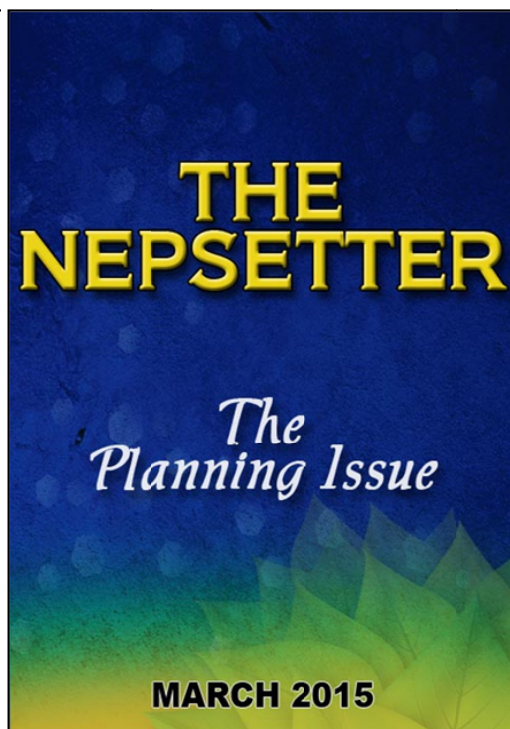




A PUBLICATION OF THE NATIONAL ENVIRONMENT AND PLANNING AGENCY



IN THIS ISSUE

Planning: Cornerstone of Development

Orderly towns with neatly laid out streets and available amenities such as hospitals, schools and parks are what many countries aim to achieve. There was a time in the historical development of many urban settlements when development occurred but not according to a strategic plan. Unplanned and explosive growth of cities in the 18th Century, Europe and North America gave rise to giant sprawling towns with slums that were crowded, dirty and a threat to healthy living.

Through public health measures and planning, governments were able to address the health concerns while catering to the overall well-being of inhabitants of these settlements. Today, planners are of national importance as they help countries in their quest to achieve sustainable development.

In Jamaica, the National Environment and Planning Agency (NEPA) has oversight for national planning. The Agency is in the process of completing Development Orders for parishes, inclusive of urban centres. The Development Orders also outline the specific zoning for the major urban centres; that is, towns or cities that fall within the area covered by the Development Order. Each Development Order is crafted by a team of

highly skilled planners in consultation with stakeholders, land owners and other interested parties. It is intended that each major urban centre will have its own Local Area Plan to achieve its orderly development. There is more on this initiative later in this issue. With assistance from other government entities, NEPA reviews over a 1,000 applications for planning permission annually and makes recommendations for approval or refusal to the minister with responsibility for planning.

The Agency is guided by several pieces of legislation in making its decisions on planning applications and planning issues relating to urban centres. These include inter alia; the Town and Country Planning Act, The Local Improvements Act and the Land Development and Utilization Commission Act. NEPA continues on its mission to promote sustainable development by ensuring protection of the environment and orderly development in Jamaica. It's a challenge, but one that is achievable through the efforts of the Agency, its partners, and the support and participation of all Jamaicans.

This is our island, let's all play our role in protecting it.



Development Order Project

Four new Development Orders are to be gazetted by the end of this year.



World Town Planning Day 2014

Photo highlights of Jamaica's activities to mark the calendar day.

Development Order Project on Track

by Deleen Powell

Jamaica is a step closer to seeing orderly development in four parishes, namely – Portland, Manchester, Trelawny and Westmorland (Negril / Green Island).

This is so, as the provisional Development Orders for these areas are expected to become law before the end of 2015. The documents are currently being reviewed by the Ministry of Water, Land Environment and Climate Change. The Provisional Orders were recently promulgated by NEPA on behalf of the Town and Country Planning Authority (TCPA) and they address many of the challenges faced by residents and commuters within the island's urban centres. The documents outline policies that provide guidance for issues related to parking, public transportation facilities and urban sprawl. The Development Orders, which were promulgated by the TCPA in October 2013, also address encroachment in ecologically sensitive areas, waste treatment and

management, conflicting land uses (residential/ commercial use) and ease of access within the areas.

The new Orders give a number of recommendations on how developments inclusive of their urban centres can be streamlined to promote efficiency, reduce congestion, enhance the character of communities and support vibrant local economies.

Provisional Development Orders have also been drafted for Kingston and St. Andrew, St. Thomas, Clarendon, St. Catherine, St. Elizabeth, Hanover and St. James. The Provisional Orders for St. Elizabeth, Hanover and St. James will be promulgated in the 2015/ 2016 financial year. Plans are also afoot to draft the St. Mary Provisional Order in 2015/ 2016 and the Portmore Provisional Order in the following year.



Mandeville Regional Hospital, Manchester

DID YOU KNOW?

Urban Planning concerns itself with **research and analysis, strategic thinking, architecture, urban design, public consultation, policy recommendations, implementation and management.**

Learn the Lingo: Planning terms 101

Set back

Distance of the forward most part of the building from any of the property boundaries

Zoning

Designation of land for various uses

Habitable Room

Any room or space intended primarily for human occupancy. This includes living rooms. Therefore, a one bedroom apartment with a living room has two habitable rooms.

Environmental Impact Assessment

A brief examination of the environmental implications of a proposed development project

Amenity Area

Communal spaces within the boundaries of a project intended for leisure purposes may include landscaped areas, communal lounges and swimming pools.

Scenes from World Town Planning Day 2014

NEPA and its partners celebrated World Town Planning Day, with a church service, public lecture and exhibition on the day (November 8) and career talks throughout the month. Here are the highlights:



World Town Planning Day Thanksgiving Service at the Andrews Memorial Seventh Day Adventist Church

DID YOU KNOW?

The Theme for World Town Planning Day 2014 was **Equality in the City: Making cities socially cohesive**.



Minister of Water, Land Environment and Climate Change Hon. Robert Pickersgill (left) receives a token from Dione Chambers of NEPA following his keynote address. Looking on is Dr. Carol Archer, Dean of the Faculty of the Built Environment at the University of Technology.



These students of Cumberland High School in St. Catherine share a 'Kodak moment' with NEPA's Senior Planner, Diana McPherson

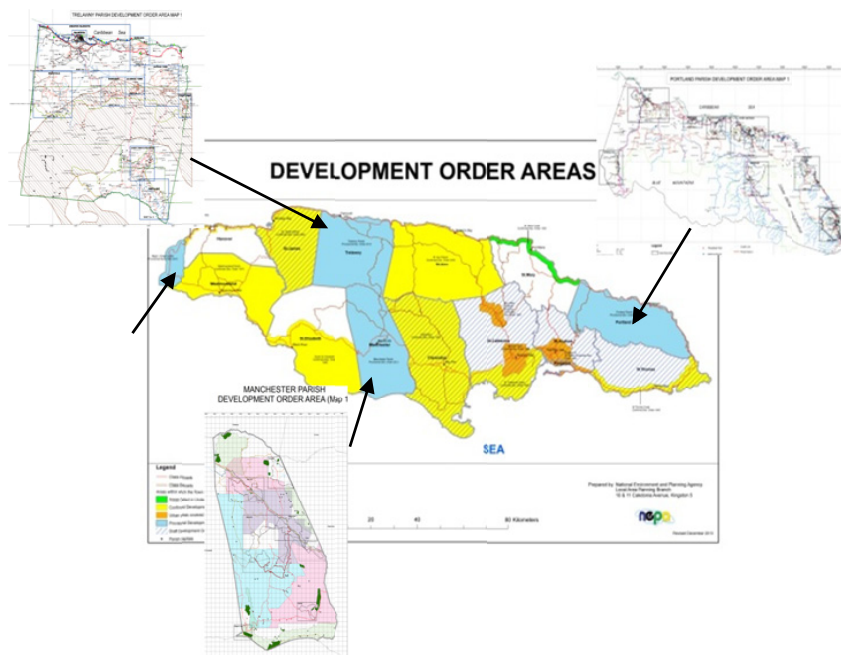
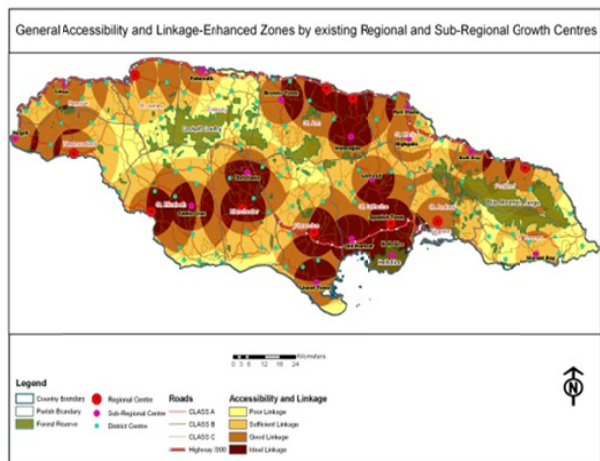
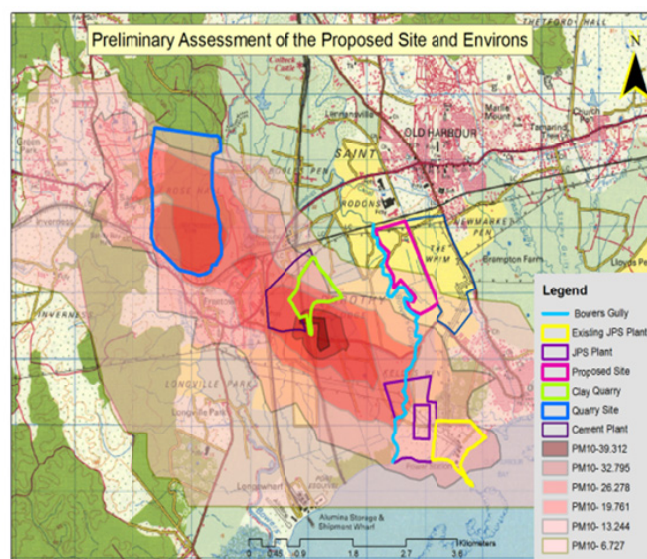
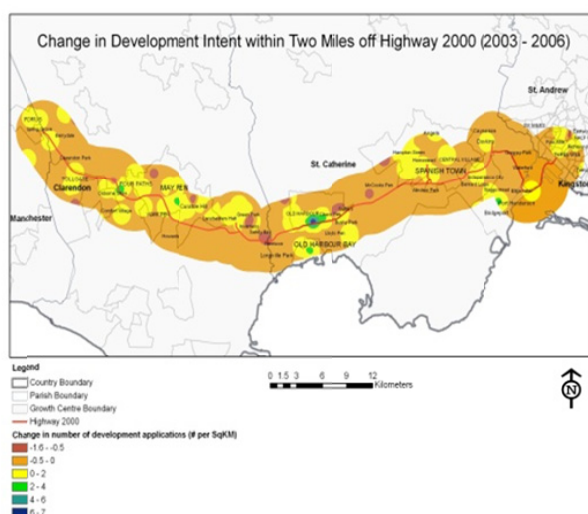
The Use of GIS in Spatial Planning

One of the most valuable tools in a planner's arsenal is Geographic Information System technology. A Geographic Information System (GIS) is designed to capture, store, manipulate, analyze, manage, and present all types of spatial or geographical data. This means that all the physical characteristics of land can be mapped using GIS. It is used in land use data collection, planning and zoning and development control.

At the National Environment and Planning Agency, GIS is used to assist in analysis and decision-making in a wide variety of areas in Spatial Planning; including inter alia: Settlement Strategy Planning, Zoning and Development Planning, Development Control etc.

These and other uses of GIS were highlighted during the recent celebration of GIS week, November 14-19. Jamaica's celebrations were spearheaded by the Land Information Council of Jamaica, the National Spatial Data Management Division, and the Ministry of Water Land Environment and Climate Change. The 2014 theme was **"GIS only a click away"**.

NEPA's GIS Unit joined in the 2014 celebrations by mounting displays at the Business Executive Forum at the Terra Nova Hotel on November 14 and at the UWI Assembly Hall on November 19.



An aerial view of
Downtown, Kingston



QUESTIONS OR COMMENTS?

Contact us:

National Environment and Planning Agency

10 & 11 Caledonia Avenue

Kingston 5

Telephone: 1 (876) 754-7540

Email: pubed@nepa.gov.jm

EDITORIAL COMMITTEE

Editor-in-Chief

Dionne Rose

Executive Editor

Deleen Powell

Proof Readers

Jennifer Rankine

Cynthia Vaughan

Layout

Phillippa Mills

Photographer

Kenta Morishima